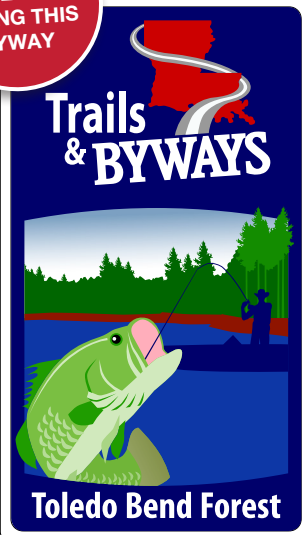


LOOK FOR THESE SIGNS ALONG THIS BYWAY



14

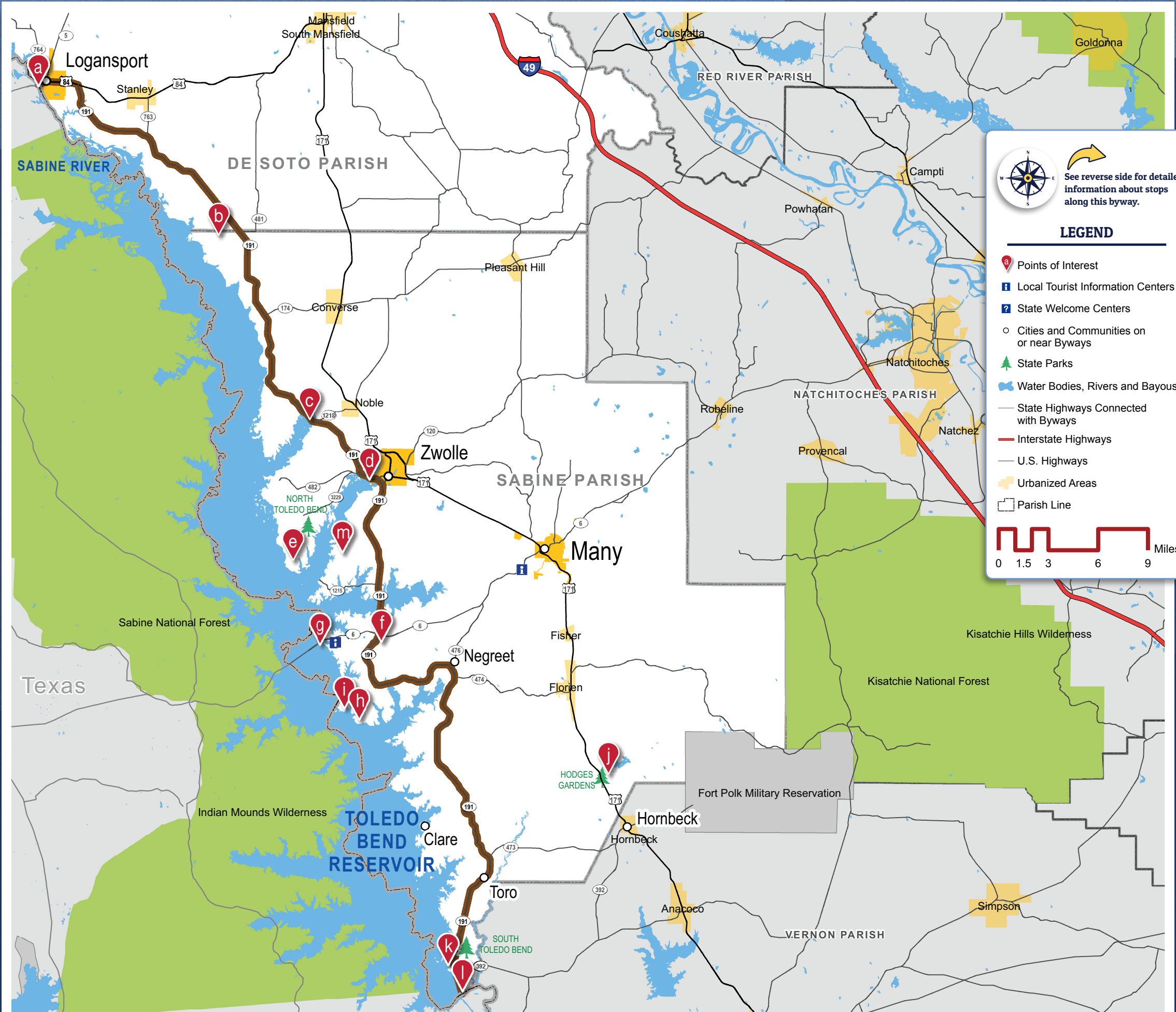
TOLEDO BEND FOREST BYWAY



Natural beauty and outdoor recreation entice visitors to drive the 79-mile, eco-rich, Toledo Bend Forest Byway. The route starts at US 84 in Logansport and continues to LA 191 where it runs south to the Louisiana/Texas line, ending at the Toledo Bend Dam. The byway includes mileage in both Sabine and DeSoto Parishes and runs parallel to the 186,000-acre Toledo Bend Reservoir, the fifth largest man-made lake (by surface area) in the United States.

This inland body of water supports an abundance of outdoor recreation including fishing, swimming and water sports, bicycling, golfing, ATV riding, camping, picnicking, and hunting. The gently rolling landscape of the roadway is flanked by southern pine and hardwood forests, lush farmlands, and beautiful lake views. In addition to the lake and Sabine River, visitors will encounter picturesque vistas and overlooks, wildlife refuges, distinctive flora and fauna, birding opportunities, and nature trails. Conveniently located off LA 191 are more than 30 accommodations, including marinas, resorts, and lodges.

LouisianaByways.com





Here's a sampling of the many attractions throughout the Toledo Bend Forest Byway. Let your stories begin here.

MORE INFORMATION

Call or visit the welcome centers or CVB visitor information areas listed, and find us online at LouisianaByways.com.

DRIVING TIPS:

Don't litter — keep Louisiana's Byways clean
Note: some attractions do not have pull-offs or have narrow shoulders along the roadway.

a LOGANSPORT HISTORIC DOWNTOWN AND RIVERFRONT

Logansport boasts the only international boundary marker existing within the continental United States. The one-of-a-kind granite shaft landmark was placed at its current location in 1841. The Sabine River was officially established as the boundary between the United States and Spanish Mexico by the Adams-Onís Treaty of 1819. Twenty years and a revolution later, the demarcation of the official border line between Louisiana and Texas was established in the center of the Sabine River.

Logansport, LA 71408,
318-697-5359, townoflogansport.com

b COW BAYOU WILDERNESS AREA

Cow Bayou Wilderness Area is a beautiful 228-acre site located on the northern section of Toledo Bend Lake. Opportunities abound for ATV enthusiasts to ride smooth trails or to get into a muddy challenge. Approximately eight miles of ATV-marked trails form a figure eight shape to bring the riders back to their starting point. The park is part of the Sabine River Authority system and is available for primitive overnight camping.

15091 Texas Hwy, Many 71449, 318-256-4114, 800-259-5253,
toledo-bend.com/toledo_bend/index.asp?request=sra_3

c SAN PATRICIO SCENIC OVERLOOK San Patricio Scenic Overlook is a roadside pullover with a fishing pier where catfish are plentiful. San Patricio is a tributary that runs into the Sabine River. The overlook includes picnic tables and is located on the west side of LA 191 between mile markers 47 and 48 or 0.2 miles north of the junction where LA 1218 intersects LA 191.

13584 LA 19, Noble, LA,
toledobendlakecountry.com/listing/san-patricio-overlook



d CLYDE'S CROSSING Clyde's Crossing is a 2.5-acre park located off of Hwy 191 in Zwolle where visitors can enjoy a picnic area, barbecue pits, a covered fishing pier, and incredible scenery of Toledo Bend Lake. This park commemorates the actual historical site of the town of Clyde and its early years of trading goods and communication with the West.

19099 LA 191, Zwolle, LA 71486, 318-256-4114, srala-toledo.com

e NORTH TOLEDO BEND STATE PARK North Toledo Bend State Park, with its cabins and RV pads, provides a venue for a wide variety of water-related activities, including fishing, swimming, and boating. Land-based activities such as camping, hiking, biking, picnicking, and relaxing in the heart of nature are also available in abundance across the more than 900-acre park.

2907 North Toledo Park Road, Zwolle, LA 71486,
888-677-6400 or 318-645-4715, crt.state.la.us

f EL CAMINO REAL NATIONAL HISTORIC TRAIL El Camino Real de los Tejas connected a series of Spanish missions and posts, from Mexico City to nearby Los Adaes (first capital of the Texas province). Routes used by Spanish explorers that became the Camino Real followed established Indian trails and trade routes; the road's development had irreversible impacts on the native people of Texas and Louisiana. It linked unconnected cultural and linguistic groups, and served as an agent for cultural diffusion, biological exchange, and communication.

LA 6, Many, 71449, 337-286-9075, nps.gov/elte

g TOLEDO BEND RESERVOIR Toledo Bend Reservoir is located on the border between Texas and Louisiana. It is a 186,000-acre lake with 1,200 miles of shoreline. It is the largest man-made body of water in the south and fifth largest in surface area in the United States. Toledo Bend offers unlimited opportunities for fishing and recreational activities. There are over 35 marinas and accommodations located around Toledo Bend.

15091 Texas Hwy., Many, LA 71449,
318-645-6141, toledo-bend.com

h CYPRESS BEND PARK Cypress Bend Park is located on 114 acres of forested land with roughly one mile of Toledo Bend Lake shoreline. Overnight accommodations available include 60 RV campsites with water, sewer and 50, 30, and 20 amp electrical hook-ups; and new fully furnished cabins with satellite TV, air conditioning, heating and a beautiful waterfront view. Eight fully-furnished RV trailer rentals are available as well as primitive tent camping areas. Spend a relaxing day on the newly renovated beach and enjoy meals in one of the covered pavilions with picnic tables and restrooms. For visitors interested in fishing, there is a six-lane paved boat ramp and a lighted fishing pier.

3462 Cypress Bend Road, Many, LA 71449, 318-256-4118,
srala-toledo.com, toledobend.com/camping--cypress-bend-park/373

i CYPRESS BEND GOLF RESORT & CONVENTION CENTER

Cypress Bend Golf Resort & Convention Center is located on Toledo Bend Lake. This premier property offers one of the finest 18-hole golf courses in the South. You'll feel the magic the moment you set foot on Cypress Bend and experience spectacular views at every turn. The resort features 96 luxurious guest rooms, including 17 suites, 11,000 square feet of meeting space, dining, full service spa, fitness center, and heated indoor/outdoor pool.

2000 Cypress Bend Parkway,
Many, LA 71449,
318-590-1500, cypressbend.com

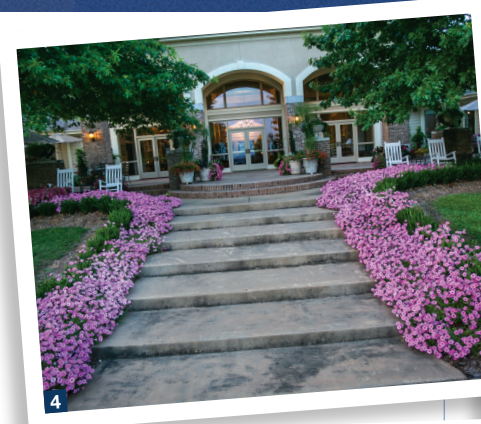
j HODGES GARDENS STATE PARK

This 4,700-acre park is between Florien and Hornbeck, near the Toledo Bend reservoir of the Sabine River in Sabine Parish. Famous for its botanical gardens nestled in the tall pines of west-central Louisiana, Hodges Gardens is a natural wonderland composed of an old domestic rose garden, new hybrid roses, seasonal flora, cascading waterfalls and stunning multi-level floral gardens. Overnight accommodations are available around a 225-acre trophy bass fishing lake.

1000 Hodges Loop, Between Many and Leesville along US 171,
Florien, LA 71429, 318-354-3523,
crt.state.la.us/louisiana-state-parks/parks/hodges-gardens-state-park

k SOUTH TOLEDO BEND STATE PARK South Toledo Bend State Park offers cabins, RV and primitive camping, world-class fishing, hiking and biking trails, ATV trails, swimming, lake access, picnic areas, and numerous scenic waterfront views from many vantage points. Learn about local animal and plant life at the park's visitor center. An open-air breezeway leads out to the observation deck and a majestic view of the lake and nearby islands.

120 Bald Eagle Road, Anacoco, LA 71403,
337-286-9075 or 888-398-4770,
crt.state.la.us/louisiana-state-parks/parks/south-toledo-bend-state-park



l TOLEDO BEND DAM Toledo Bend Dam was built on the Sabine River to create the 186,000-acre Toledo Bend Reservoir, the largest man-made body of water in the South. With an average depth of 60 feet, Toledo Bend Lake is 15 miles across at its widest point and has 1,264 miles of shoreline. The reservoir's storage capacity is 4,777,000-acre feet (an acre foot is the amount of water needed to cover one acre of land to a depth of one foot). Toledo Bend Dam is located on the southernmost end of LA 191.

South end of LA 191, Anacoco, LA,
318-256-5880, toledobendlakecountry.com

m WILDWOOD RESORT Wildwood Resort provides a great alternative to a typical hotel with unexpected luxury in a beautiful wooded setting overlooking Toledo Bend Reservoir. There are 44 lodges, cabins, and suites which are unique, spacious and all include lake or pond views. The resort features six stocked ponds, a 460-foot covered fishing pier, rental canoes, paddleboats, and four swimming pools.

129 Wildwood Drive, Zwolle, LA 71486,
318-645-6114, wildwood-resort.com

i TOURIST INFORMATION CENTERS:

DESOTO PARISH TOURIST BUREAU
115 N. Washington Ave., Mansfield
318-872-1177, discoverdesoto.com

SABINE PARISH TOURIST & RECREATION COMMISSION
1601 Texas Hwy., Many
800-358-7802, toledobendlakecountry.com

TOLEDO BEND TOURIST CENTER
15091 Texas Hwy., Many
800-259-LAKE

Take your time, stop to take in the sights, dine on local Louisiana cuisine, shop at the local boutiques along the way and stay over a night or two.

Get additional trip ideas by visiting LouisianaByways.com or one of our Welcome Centers along the route.

IMAGES: 1 Fishing in North Toledo Bend State Park. 2 Tubing in Toledo Bend Lake. 3 Campsite with lake view in South Toledo Bend State Park.

4 Cypress Bend Golf Resort & Convention Center. 5 Wildwood Resort. ©Sabine Parish 6 Waterfalls in Hodges Gardens State Park.



Funding for this document is provided in part by the Federal Highway Administration.